
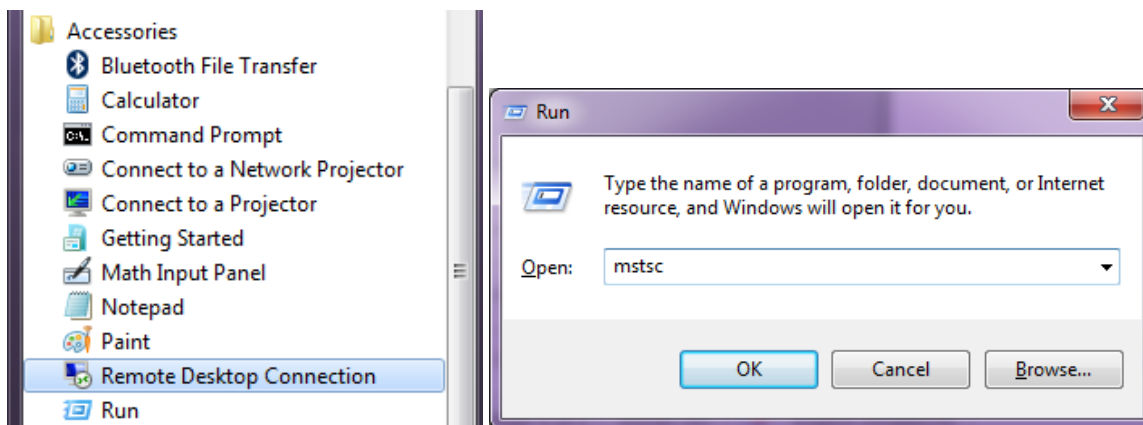


## Accessing the Lab

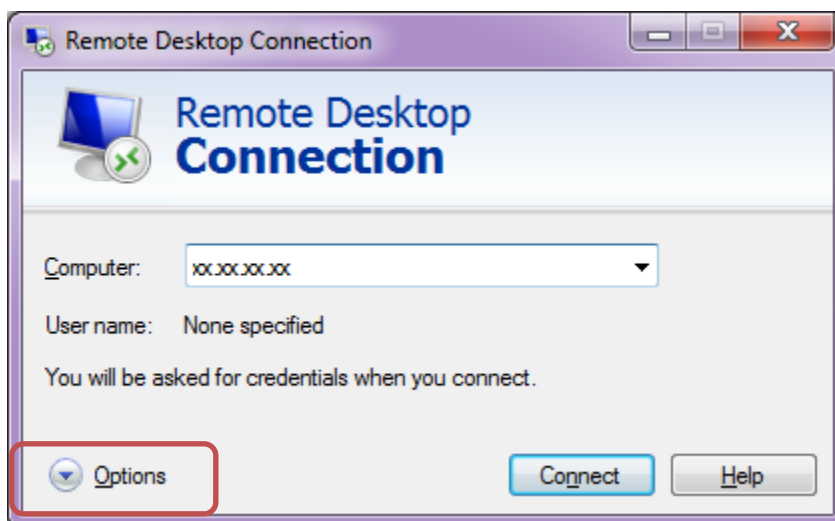
### Preliminary requirements for the lab

#### Task 1: Accessing the Lab

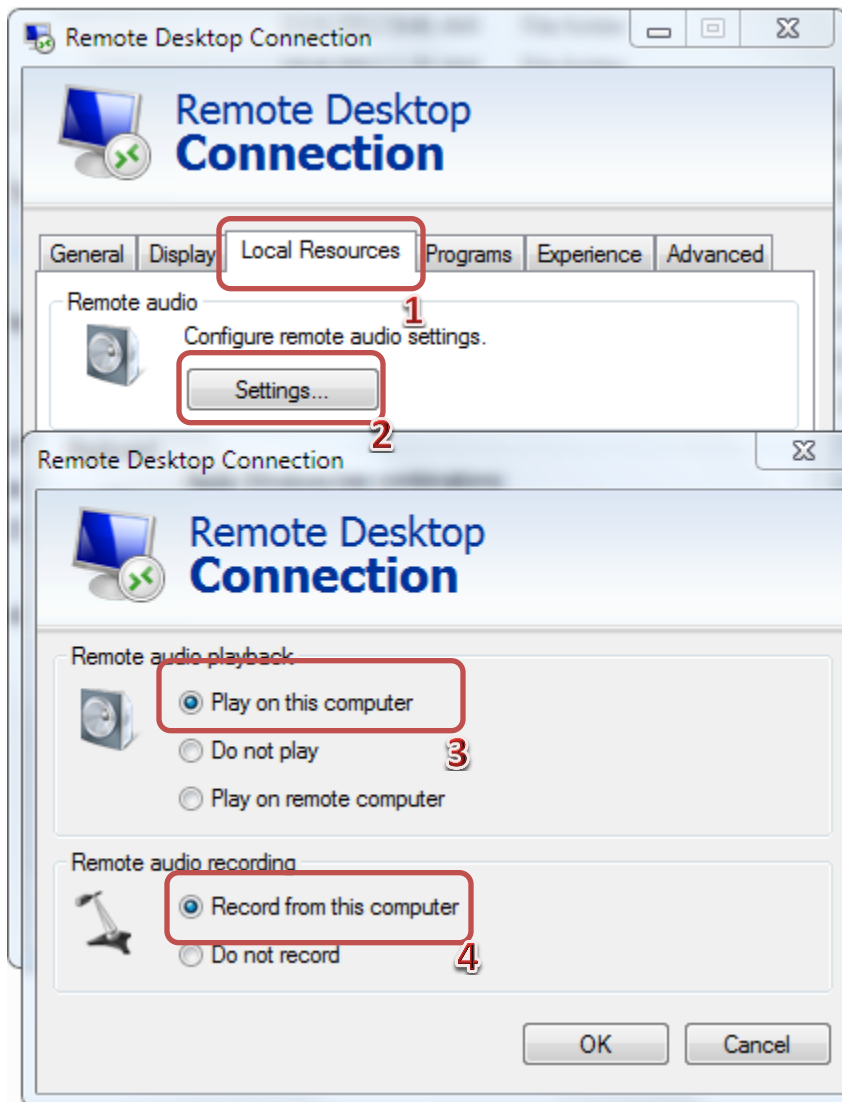
1. Launch Remote Desktop Connection by clicking on Start-> All Programs -> Accessories -> Remote Desktop Connection or alternatively Press “ + R ” key together and type in “*mstsc*” without the quotes.



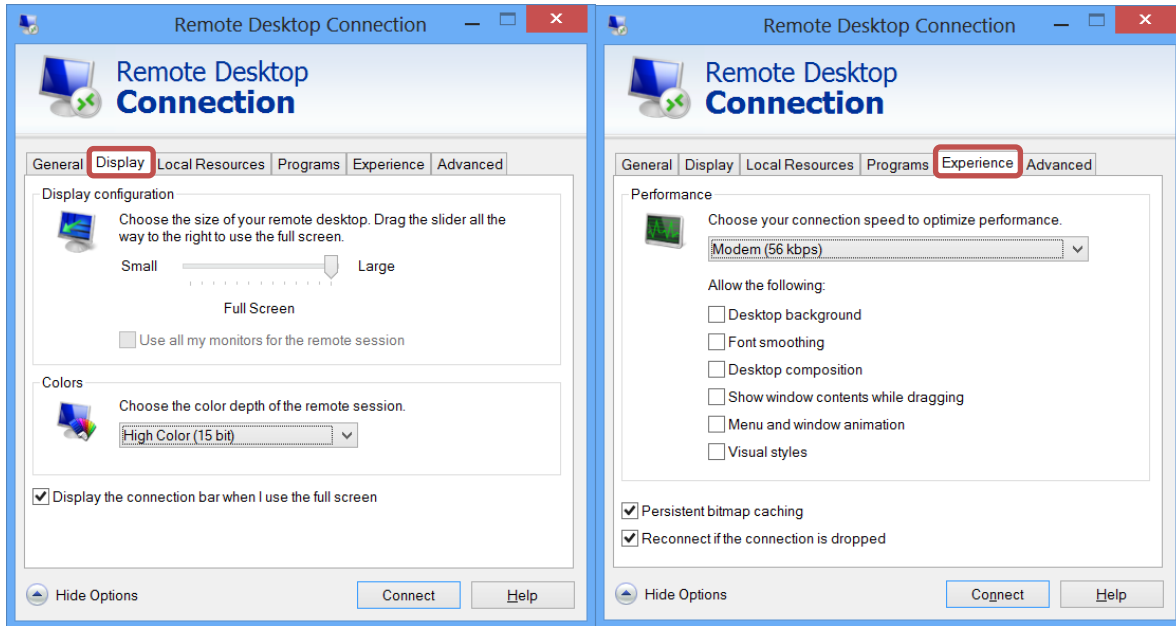
2. Click on the OPTIONS button in the RDP window.



3. Prior to starting, an option on the LOCAL RESOURCES tab of the Remote Desktop Program must be set in order for calls to be placed within the lab.



4. To conserve resources on the host machine, set the following options on the EXPERIENCE and DISPLAY tabs.



5. On the GENERAL tab, enter the IP address of your assigned pod and the username provided to you. Then click on the CONNECT button.

